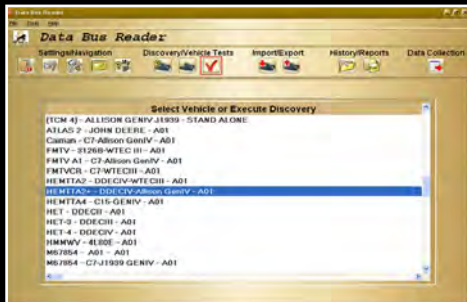


ONeTOOL[®]

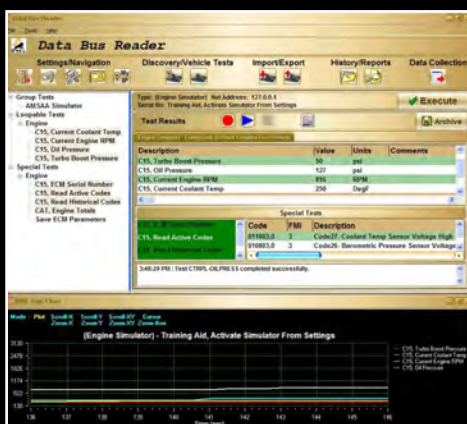
ONEIL - PANASONIC - SMARTRONIX

THE VERSATILE & RELIABLE TOOL ESSENTIAL FOR MAINTENANCE ACTIVITIES.

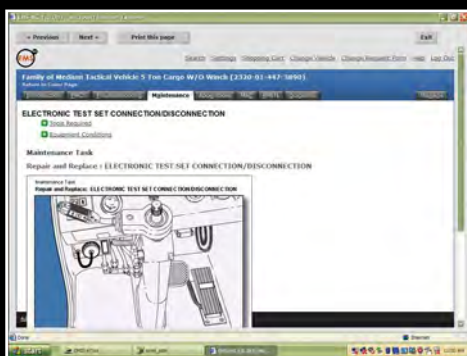




ONE TOOL brings together all your critical equipment diagnostics and repair applications in one convenient, easy to use interface.



Diagnostic test results use the Built-In Test Equipment (BIT/BITE) interfaces that are included in the ONE TOOL.



Get immediate access to Electronic Technical Manuals/Interactive Electronic Technical Manuals (ETMs/IETMs) and computer-based training resources.

THE RIGHT TOOL

Having the right tool for the job is essential for any successful field operation. ONE TOOL from ONEIL provides a comprehensive, integrated diagnostics and electronic maintenance support system. Within three minutes of connecting ONE TOOL, simultaneous health checks of all bus controlled components are complete. Results of potentially defective subsystems are displayed through ONE TOOL's unique Data Bus Reader. Additional diagnostic routines can run on multiple subsystems using ONE TOOL's common interface to identify potential platform issues.

EASY TO USE

ONE TOOL can evaluate, display and record all of a vehicle's bus monitored systems simultaneously. When a fault is identified, a technician can go directly to the troubleshooting process to identify and isolate the defective part or subsystem. When the defective part is identified, ONE TOOL's Interactive Electronic Technical Manual (IETM) shows how to complete the repair. All captured data, such as the tech name and the repairs completed are stored in a historical database for future use. The stored data can be used later for trend analysis, financial tracking, and vehicle maintenance records.

ONE COMPLETE TOOLBOX

The rugged, integrated ONE TOOL brings everything together for vehicle diagnostics, repair and maintenance. Its extensive field support provides vital information for every vehicle in your fleet, to quickly and effectively diagnose equipment failures. The ONE TOOL uses diagnostic devices or manual inputs to "feed" the system. ONE TOOL then identifies any defects or faults, and guides operators through the steps to repair or replace the failing component. *Finally, a single integrated resource can diagnose faults, offer repair and maintenance guidance to keep your vehicles operational, and save tracking information in a historical database.*

STRONG ECONOMICS

ONE TOOL is as economical as it is versatile. In addition to its portability and outstanding diagnostic and repair resources, the ONE TOOL purchase price is about 1/2 the price of comparable systems. When you combine that with the money ONE TOOL saves you in reduced downtime and more efficient maintenance, and historical tracking ability, we think you'll agree that this is one tool you will want to have with you in the field and in the shop.



EVERY MAINTENANCE SPECIALIST SHOULD HAVE ONE.

ONeTOOL SOFTWARE

ONeTOOL's software establishes one common interface to perform stand-alone diagnostic testing and Interactive Electronic Technical Manual (IETM) management.

TOTAL SYSTEM SUPPORT

ONEIL's ONeTOOL supports your entire system. If you have difficulties diagnosing a vehicle malfunction with your ONeTOOL, we'll help you determine where the difficulty lies, whether it's a vehicle, cable connection, software, or the computer itself. What's more, we provide this support 24/7, anywhere in the world.

COMPLETE TRAINING

Our training was carefully developed to ensure that you get the most out of your ONeTOOL right from the start. In addition to classroom theory, we provide hands-on training using the actual hardware that your technicians need to support. That way, even less-experienced technicians can troubleshoot and repair vehicles quickly and accurately.

ONE POWERFUL TOOL

- Electronic/Interactive Electronic Technical Manuals (ETMs or IETMs)
- Computer-Based Training Systems
- Built-In Test Equipment (BIT/BITE)
- Ruggedized Laptop/Tablet Computer
- Wireless Wi-Fi and WAN Connectivity
- Integrated Diagnostic Ports and Connectors
- Supports More Than 1,200 Stand-Alone Tests

ONeTOOL SYSTEM COMPONENTS

- Panasonic CF-19 Tablet PC
- Test Equipment Probes and Case
- USB Memory Stick
- Dearborn Protocol Adapter III
- PCMCIA Digital Multimeter
- Test Equipment Housing
- 12-Pin DDL Cable
- 6-Pin DDL Cable
- 9-Pin DDL Cable
- NATO Power Adapter
- Haldex Interface Cable
- Ethernet Cable
- 9-Pin Serial Cable
- 6-Pin GM/UART Cable



TECHNICAL SPECIFICATIONS

SUPPORTED PROTOCOLS:

- J1587
- J1850
- J1708
- J1939

SUPPORTED PLATFORMS

- ATLAS II
- Bradley & M1A2 Tanks
- FMTV - Family of Medium Tactical Vehicles
- HET - Heavy Equipment Trucks
- HEMTT - Heavy Expanded Mobility Tactical Truck
- Hercules - M88
- HIPPO
- HMMWV
- ITV - Internally Transported Vehicle
- LET - Light Equipment Transporter - M915 Tractor
- LWPM - Lightweight Prime Mover
- MRAP - Caiman, Cougar, RG-31, MaxxPro
- MTRV - Medium Tactical Vehicle Replacement
- PLS - Palletized Loading System
- Stryker

SUPPORTED SYSTEMS

Caterpillar: 3126A, 3126B, C7, C12, C15
 Detroit Diesel: DDEC II, DDEC III, DDEC IV
 Wabco ABS: Version C, Version D, Version E
 Eaton: Generation 4 ABS, CTIS
 GM: 4L80E
 Allison: ATEC, WTEC, GENIV
 Legacy: DCA/ICE Test Inventory

RUGGEDIZED TABLET COMPUTER SPECS

- MIL-STD-810G certified rugged design
- IP65 certified sealed all-weather design
- Full magnesium alloy case with hand strap
- Shock-mounted flex-connect hard drive with quick-release
- 2GB SDRAM (DDR3-1066MHz) standard, expandable to 8GB
- 160GB hard drive (shock-mounted flex-connect with quick-release)
- Windows® 7 Professional (with XP downgrade option)
- 10.4" sunlight-viewable touchscreen and sealed, backlit keyboard

OPTIONAL INTEGRATED EQUIPMENT:

- Wide Area Wireless Solutions
- GPS Receiver
- Backlit Keyboard, sealed
- DVD or 2nd Battery
- Spare Battery Charger

BASIC CONFIGURATIONS:

ONE TOOL DC - DATA COLLECTOR

Designed as a basic maintenance aid and diagnostic data collector, this unit can read and interpret faults and perform intrusive tests from an ever-evolving long list of vehicle ECUs.

ONE TOOL MC - MOTOR POOL CONFIGURATION

Designed for U.S. Army and USMC ground tactical vehicle troubleshooting, the ONE TOOL MC with integrated test equipment can perform all testing requirements of current Class V IETMs, and a variety of legacy test equipment, on just about any vehicle or weapons platform.

ONE TOOL CA - COMMUNICATIONS APPLICATIONS

Designed for aerospace and communications applications, this configuration contains an oscilloscope and MIL-STD-1553 interface.

Custom configurations are also available.

HOW TO ORDER:

You can order ONE TOOL directly from O'Neil & Associates by calling us at 877-866-9037, or email a request for quote directly from our website: <http://www.onetool.com/quote/>.

The ONE TOOL is also available through the GSA, on the Smartronix Contract Number GS-35F-0362J. The Smartronix part number for the ONE TOOL is ST035RC13-01-003.

You may also order ONEIL's engineering services through our GSA PES (Professional Engineering Services) contract number GS-10F-0249W.



495 Byers Rd., Miamisburg, OH 45342
 937.865.0800
 sales@oneil.com
 www.ONEIL.com